

测试报告

No. CANEC1513725002

日期: 2015年08月12日 第1页,共10页

东莞市双联轴承有限公司

中国广东省东莞市莞城区八达路中环大厦5楼

以下测试之样品是由申请者所提供及确认: 外圈; 内圈; 防尘盖; 钢球; 保持架; 润滑脂.

SGS工作编号: CP15-045514 - GZ

型号: 608ZZ

客户参考信息: 见备注

样品接收日期: 2015年08月06日

测试周期: 2015年08月06日 - 2015年08月10日

测试要求: 根据客户要求测试

测试方法: 请参见下一页

测试结果: 请参见下一页

结论: 基于所送样品进行的测试, 镉、铅、汞、六价铬、多溴联苯(PBBs)、多溴二苯醚(PBDEs)的测试结果符合欧盟RoHS指令2002/95/EC的重订指令2011/65/EU附录II的限值要求。

通标标准技术服务有限公司广州分公司

授权签名

李丽贤

Yan Lee 李丽贤

批准签署人

备注: 本报告是编号为CANEC1513725001报告的中文版本。



This document is issued by the Company subject to its General Conditions of Service printed overleaf, available on request or accessible at <http://www.sgs.com/en/Terms-and-Conditions.aspx> and, for electronic format documents, subject to Terms and Conditions for Electronic Documents at <http://www.sgs.com/en/Terms-and-Conditions/Terms-e-Documents.aspx>. Attention is drawn to the limitation of liability, indemnification and jurisdiction issues defined therein. Any holder of this document is advised that information contained hereon reflects the Company's findings at the time of its intervention only and within the limits of Client's instructions, if any. The Company's sole responsibility is to its Client and this document does not exonerate parties to a transaction from exercising all their rights and obligations under the transaction documents. This document cannot be reproduced except in full, without prior written approval of the Company. Any unauthorized alteration, forgery or falsification of the content or appearance of this document is unlawful and offenders may be prosecuted to the fullest extent of the law. Unless otherwise stated the results shown in this test report refer only to the sample(s) tested.

Attention: To check the authenticity of testing / inspection report & certificate, please contact us at telephone: (86-755) 8307 1443, or email: CN.Doccheck@sgs.com

198 Kezhu Road, Sciencetech Park Guangzhou Economic & Technology Development District, Guangzhou, China 510663 t (86-20) 82155555 f (86-20) 82075113 www.sgsgroup.com.cn
中国·广州·经济技术开发区科学城科珠路198号 邮编: 510663 t (86-20) 82155555 f (86-20) 82075113 e sgs.china@sgs.com

测试报告

No. CANEC1513725002

日期: 2015年08月12日 第2页,共10页

测试结果:

测试样品描述:

样品编号	SGS样品ID	描述
SN1	CAN15-137250.001	银灰色金属环 (大)
SN2	CAN15-137250.002	银灰色金属环 (小)
SN3	CAN15-137250.003	银灰色金属
SN4	CAN15-137250.004	银灰色金属珠子
SN5	CAN15-137250.005	银灰色金属环
SN6	CAN15-137250.006	棕色膏体

备注:

- (1) 1 mg/kg = 0.0001%
- (2) MDL = 方法检测限
- (3) ND = 未检出 (< MDL)
- (4) "-" = 未规定

RoHS指令2011/65/EU

- 测试方法:
- (1)参考IEC 62321-5:2013, 用ICP-OES测定镉的含量
 - (2)参考IEC 62321-5:2013, 用ICP-OES测定铅的含量
 - (3)参考IEC 62321-4:2013, 用ICP-OES测定汞的含量
 - (4)参考IEC 62321:2008, 用紫外-可见分光光度计比色法测定六价铬的含量
 - (5)参考IEC 62321-6:2015, 用GC-MS测定PBBs(多溴联苯)和PBDEs(多溴二苯醚) 的含量

测试项目	限值	单位	MDL	006
镉 (Cd)	100	mg/kg	2	ND
铅 (Pb)	1,000	mg/kg	2	ND
汞 (Hg)	1,000	mg/kg	2	ND
六价铬(Cr(VI))	1,000	mg/kg	2	ND
多溴联苯之和(PBBs)	1,000	mg/kg	5	ND
一溴联苯	-	mg/kg	5	ND
二溴联苯	-	mg/kg	5	ND
三溴联苯	-	mg/kg	5	ND
四溴联苯	-	mg/kg	5	ND
五溴联苯	-	mg/kg	5	ND
六溴联苯	-	mg/kg	5	ND
七溴联苯	-	mg/kg	5	ND
八溴联苯	-	mg/kg	5	ND



This document is issued by the Company subject to its General Conditions of Service printed overleaf, available on request or accessible at <http://www.sgs.com/en/Terms-and-Conditions.aspx> and, for electronic format documents, subject to Terms and Conditions for Electronic Documents at <http://www.sgs.com/en/Terms-and-Conditions/Terms-e-Documents.aspx>. Attention is drawn to the limitation of liability, indemnification and jurisdiction issues defined therein. Any holder of this document is advised that information contained hereon reflects the Company's findings at the time of its intervention only and within the limits of Client's instructions, if any. The Company's sole responsibility is to its Client and this document does not exonerate parties to a transaction from exercising all their rights and obligations under the transaction documents. This document cannot be reproduced except in full, without prior written approval of the Company. Any unauthorized alteration, forgery or falsification of the content or appearance of this document is unlawful and offenders may be prosecuted to the fullest extent of the law. Unless otherwise stated the results shown in this test report refer only to the sample(s) tested.

Attention: To check the authenticity of testing /inspection report & certificate, please contact us at telephone: (86-755) 8307 1443, or email: CN.Doccheck@sgs.com

198 Kezhu Road, Sciencetech Park Guangzhou Economic & Technology Development District, Guangzhou, China 510663 t (86-20) 82155555 f (86-20) 82075113 www.sgs.com.cn
中国·广州·经济技术开发区科学城科珠路198号 邮编: 510663 t (86-20) 82155555 f (86-20) 82075113 e sgs.china@sgs.com

测试报告

No. CANEC1513725002

日期: 2015年08月12日 第3页,共10页

测试项目	限值	单位	MDL	006
八溴联苯	-	mg/kg	5	ND
九溴联苯	-	mg/kg	5	ND
十溴联苯	-	mg/kg	5	ND
多溴二苯醚之和(PBDEs)	1,000	mg/kg	5	ND
一溴二苯醚	-	mg/kg	5	ND
二溴二苯醚	-	mg/kg	5	ND
三溴二苯醚	-	mg/kg	5	ND
四溴二苯醚	-	mg/kg	5	ND
五溴二苯醚	-	mg/kg	5	ND
六溴二苯醚	-	mg/kg	5	ND
七溴二苯醚	-	mg/kg	5	ND
八溴二苯醚	-	mg/kg	5	ND
九溴二苯醚	-	mg/kg	5	ND
十溴二苯醚	-	mg/kg	5	ND

备注:

(1) 最大允许极限值引用自指令2011/65/EU 附录II.

RoHS指令2011/65/EU

- 测试方法:
- (1)参考IEC 62321-5:2013, 用ICP-OES测定镉的含量
 - (2)参考IEC 62321-5:2013, 用ICP-OES测定铅的含量
 - (3)参考IEC 62321-4:2013, 用ICP-OES测定汞的含量
 - (4)参考IEC 62321:2008, 用点测试法/紫外-可见分光光度计比色法测定六价铬的含量

测试项目	限值	单位	MDL	001	002	003
镉 (Cd)	100	mg/kg	2	ND	ND	ND
铅 (Pb)	1,000	mg/kg	2	ND	ND	ND
汞 (Hg)	1,000	mg/kg	2	ND	ND	ND
六价铬(Cr(VI))	-	-	◇	阴性	阴性	阴性

测试项目	限值	单位	MDL	004	005
镉 (Cd)	100	mg/kg	2	ND	ND
铅 (Pb)	1,000	mg/kg	2	ND	ND
汞 (Hg)	1,000	mg/kg	2	ND	ND
六价铬(Cr(VI))	-	-	◇	阴性	阴性

备注:

(1) 最大允许极限值引用自指令2011/65/EU 附录II.



This document is issued by the Company subject to its General Conditions of Service printed overleaf, available on request or accessible at <http://www.sgs.com/en/Terms-and-Conditions.aspx> and, for electronic format documents, subject to Terms and Conditions for Electronic Documents at <http://www.sgs.com/en/Terms-and-Conditions/Terms-e-Document.aspx>. Attention is drawn to the limitation of liability, indemnification and jurisdiction issues defined therein. Any holder of this document is advised that information contained hereon reflects the Company's findings at the time of its intervention only and within the limits of Client's instructions, if any. The Company's sole responsibility is to its Client and this document does not exonerate parties to a transaction from exercising all their rights and obligations under the transaction documents. This document cannot be reproduced except in full, without prior written approval of the Company. Any unauthorized alteration, forgery or falsification of the content or appearance of this document is unlawful and offenders may be prosecuted to the fullest extent of the law. Unless otherwise stated the results shown in this test report refer only to the sample(s) tested.

Attention: To check the authenticity of testing /inspection report & certificate, please contact us at telephone: (86-755) 8307 1443, or email: CN.Doccheck@sgs.com

198 Kezhu Road, Sciencetech Park Guangzhou Economic & Technology Development District, Guangzhou, China 510663 t (86-20) 82155555 f (86-20) 82075113 www.sgsgroup.com.cn
中国·广州·经济技术开发区科学城科珠路198号 邮编: 510663 t (86-20) 82155555 f (86-20) 82075113 e sgs.china@sgs.com

测试报告

No. CANEC1513725002

日期: 2015年08月12日 第4页,共10页

(2) ◇点测试法:

阴性= 未检测到六价铬, 阳性= 检测到六价铬;

(当点测试结果为阴性或无法确定时,将采用沸水萃取法作进一步的结果验证.)

◇沸水萃取法:

阴性= 未检测到六价铬

阳性= 检测到六价铬; 表明50 cm²表面积的被测试样品的沸水萃取液中六价铬的浓度等于或大于0.02 mg/kg

由于未获知样品的存储条件和生产日期, 样品的六价铬测试结果仅能代表测试时样品含六价铬的状态。

备注: 所示结果006为湿样品总重量中的含量。



This document is issued by the Company subject to its General Conditions of Service printed overleaf, available on request or accessible at <http://www.sgs.com/en/Terms-and-Conditions.aspx> and, for electronic format documents, subject to Terms and Conditions for Electronic Documents at <http://www.sgs.com/en/Terms-and-Conditions/Terms-e-Document.aspx>. Attention is drawn to the limitation of liability, indemnification and jurisdiction issues defined therein. Any holder of this document is advised that information contained hereon reflects the Company's findings at the time of its intervention only and within the limits of Client's instructions, if any. The Company's sole responsibility is to its Client and this document does not exonerate parties to a transaction from exercising all their rights and obligations under the transaction documents. This document cannot be reproduced except in full, without prior written approval of the Company. Any unauthorized alteration, forgery or falsification of the content or appearance of this document is unlawful and offenders may be prosecuted to the fullest extent of the law. Unless otherwise stated the results shown in this test report refer only to the sample(s) tested.

Attention: To check the authenticity of testing /inspection report & certificate, please contact us at telephone: (86-755) 8307 1443, or email: CN.Doccheck@sgs.com

198 Kezhu Road, Sciencetech Park Guangzhou Economic & Technology Development District, Guangzhou, China 510663 t (86-20) 82155555 f (86-20) 82075113 www.sgsgroup.com.cn
中国·广州·经济技术开发区科学城科珠路198号 邮编: 510663 t (86-20) 82155555 f (86-20) 82075113 e sgs.china@sgs.com

测试报告

No. CANEC1513725002

日期: 2015年08月12日 第5页,共10页

备注:

603 ZZ	623 ZZ	633 ZZ	681X ZZ	693 ZZ	R2 ZZ	F682 ZZ	MF52 ZZ	F2.5-6
604 ZZ	624 ZZ	634 ZZ	682 ZZ	694 ZZ	R3 ZZ	F683 ZZ	MF63 ZZ	F3-8
605 ZZ	625 ZZ	635 ZZ	682X ZZ	695 ZZ	R4 ZZ	F684 ZZ	MF74 ZZ	F4-9
606 ZZ	626 ZZ	636 ZZ	683 ZZ	696 ZZ	R6 ZZ	F685 ZZ	MF83 ZZ	F4-10
607 ZZ	627 ZZ	637 ZZ	684 ZZ	697 ZZ	R8 ZZ	F686 ZZ	MF84 ZZ	F5-10
608 ZZ	628 ZZ	638 ZZ	685 ZZ	698 ZZ	R10 ZZ	F687 ZZ	MF85 ZZ	F5-11
609 ZZ	629 ZZ	639 ZZ	686 ZZ	699 ZZ	R12 ZZ	F688 ZZ	MF95 ZZ	F5-12
6000 ZZ	6200 ZZ	6300 ZZ	687 ZZ	6900 ZZ	R14 ZZ	F689 ZZ	MF104 ZZ	F6-12
6001 ZZ	6201 ZZ	6301 ZZ	688 ZZ	6901 ZZ	R16 ZZ	F6800 ZZ	MF105 ZZ	F6-14
6002 ZZ	6202 ZZ	6302 ZZ	689 ZZ	6902 ZZ	R18 ZZ	F6801 ZZ	MF115 ZZ	F7-13
6003 ZZ	6203 ZZ	6303 ZZ	6800 ZZ	6903 ZZ	R20 ZZ	F6802 ZZ	MF106 ZZ	F7-15
6004 ZZ	6204 ZZ	6305 ZZ	6801 ZZ	6904 ZZ	R24 ZZ	F692 ZZ	MF126 ZZ	F7-17
6005 ZZ	6205 ZZ	6306 ZZ	6802 ZZ	6905 ZZ	R144 ZZ	F693 ZZ	MF117 ZZ	F8-16
6006 ZZ	6206 ZZ	6307 ZZ	6803 ZZ	6906 ZZ	R168 ZZ	F694 ZZ	MF128 ZZ	F8-19
6007 ZZ	6207 ZZ	6308 ZZ	6804 ZZ	6907 ZZ	R166 ZZ	F695 ZZ	MF137 ZZ	F8-22
6008 ZZ	6208 ZZ	6309 ZZ	6805 ZZ	6908 ZZ	R1810 ZZ	F696 ZZ	MF148 ZZ	F9-17
6009 ZZ	6209 ZZ	6310 ZZ	6806 ZZ	6909 ZZ	R188 ZZ	F697 ZZ	MF149 ZZ	F9-20
6010 ZZ	6210 ZZ	6300-2RS	6807 ZZ	6910 ZZ	R1212 ZZ	F698 ZZ	FR3 ZZ	F10-17
607-2RS	625-2RS	6301-2RS	6808 ZZ	6911 ZZ	R2-5 ZZ	F699 ZZ	FR4 ZZ	F10-18
608-2RS	626-2RS	6302-2RS	6809 ZZ	6912 ZZ	MR52 ZZ	F6900 ZZ	FR6 ZZ	F12-21
609-2RS	627-2RS	6303-2RS	6810 ZZ	6900-2RS	MR63 ZZ	F6901 ZZ	FR8 ZZ	F12-22
6000-2RS	628-2RS	6304-2RS	6811 ZZ	6901-2RS	MR93 ZZ	F6902 ZZ	FR144 ZZ	F12-23
6001-2RS	629-2RS	6305-2RS	6812 ZZ	6902-2RS	MR74 ZZ	F623 ZZ	FR168 ZZ	683
6002-2RS	6200-2RS	6306-2RS	6800-2RS	6903-2RS	MR83 ZZ	F624 ZZ	F63800 ZZ	684
6003-2RS	6201-2RS	6307-2RS	6801-2RS	6904-2RS	MR84 ZZ	F625 ZZ	62200-2RS	685
6004-2RS	6202-2RS	6308-2RS	6802-2RS	6905-2RS	MR85 ZZ	F627 ZZ	62201-2RS	686



This document is issued by the Company subject to its General Conditions of Service printed overleaf, available on request or accessible at <http://www.sgs.com/en/Terms-and-Conditions.aspx> and, for electronic format documents, subject to Terms and Conditions for Electronic Documents at <http://www.sgs.com/en/Terms-and-Conditions/Terms-e-Document.aspx>. Attention is drawn to the limitation of liability, indemnification and jurisdiction issues defined therein. Any holder of this document is advised that information contained hereon reflects the Company's findings at the time of its intervention only and within the limits of Client's instructions, if any. The Company's sole responsibility is to its Client and this document does not exonerate parties to a transaction from exercising all their rights and obligations under the transaction documents. This document cannot be reproduced except in full, without prior written approval of the Company. Any unauthorized alteration, forgery or falsification of the content or appearance of this document is unlawful and offenders may be prosecuted to the fullest extent of the law. Unless otherwise stated the results shown in this test report refer only to the sample(s) tested.

Attention: To check the authenticity of testing / inspection report & certificate, please contact us at telephone: (86-755) 8307 1443, or email: CN.Doccheck@sgs.com

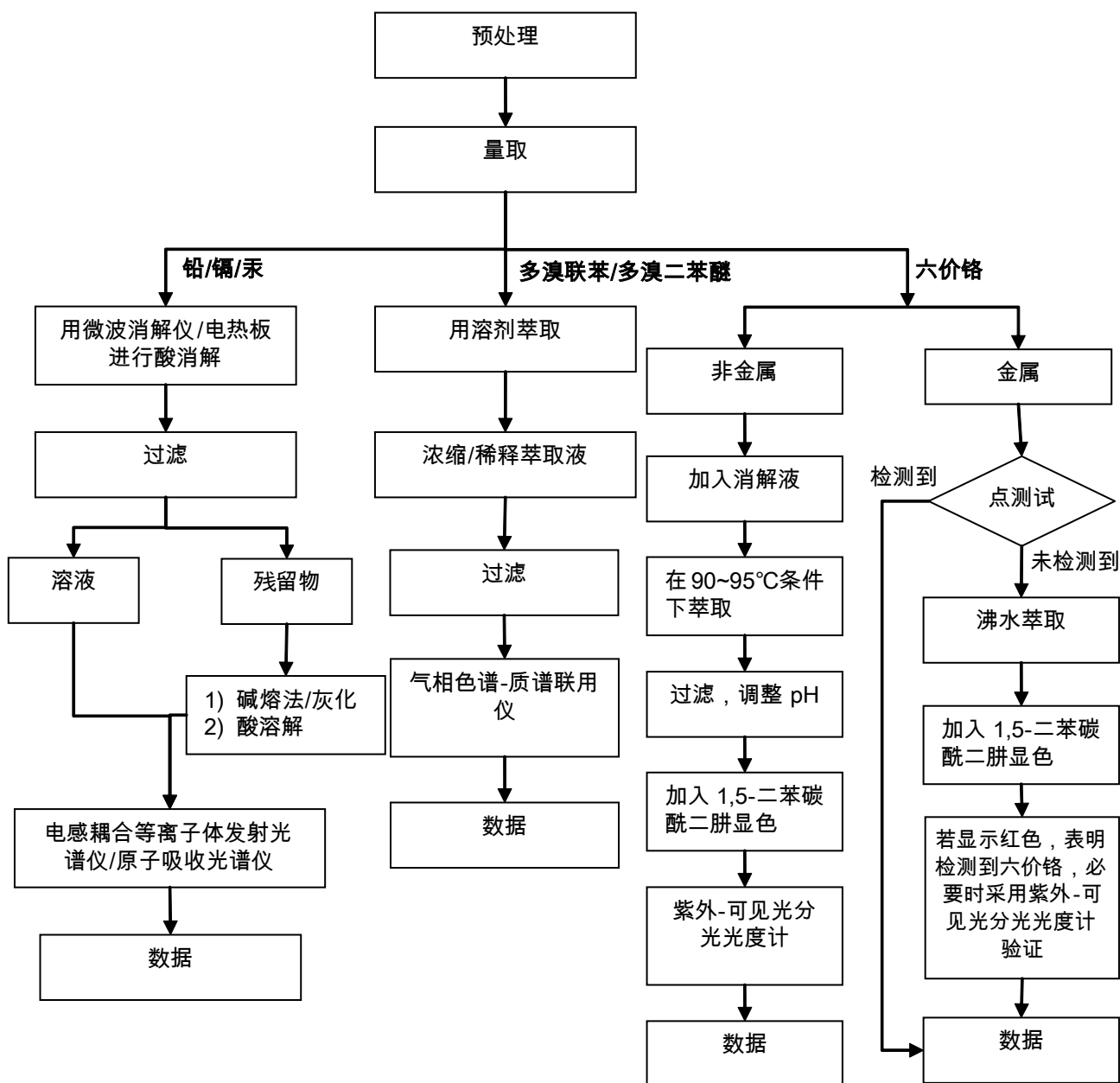
198 Kexu Road, Sciencetech Park Guangzhou Economic & Technology Development District, Guangzhou, China 510663 t (86-20) 82155555 f (86-20) 82075113 www.sgs.com.cn
中国·广州·经济技术开发区科学城科珠路198号 邮编: 510663 t (86-20) 82155555 f (86-20) 82075113 e sgs.china@sgs.com

6005-2RS	6203-2RS	6309-2RS	6803-2RS	6906-2RS	MR95 ZZ	F628 ZZ	62202-2RS	687
6006-2RS	6204-2RS	6310-2RS	6804-2RS	6907-2RS	MR104 ZZ	F629 ZZ	62203-2RS	688
6007-2RS	6205-2RS	6311-2RS	6805-2RS	6908-2RS	MR105 ZZ	F604 ZZ	62204-2RS	689
6008-2RS	6206-2RS	6312-2RS	6806-2RS	6909-2RS	MR115 ZZ	F605 ZZ	16001 ZZ	MR128
6009-2RS	6207-2RS	6211-2RS	6807-2RS	6910-2RS	MR106 ZZ	F606 ZZ	16002 ZZ	MR106
6010-2RS	6208-2RS	6212-2RS	6808-2RS	6911-2RS	MR126 ZZ	F607 ZZ	16003 ZZ	MR74
6011-2RS	6209-2RS	6213-2RS	6809-2RS	6912-2RS	MR117 ZZ	F608 ZZ	63800 ZZ	MR85
6012-2RS	6210-2RS	6214-2RS	6810-2RS	F634 ZZ	MR137 ZZ	F609 ZZ	63801 ZZ	MR63
SG10	SG15	SG20	6811-2RS	F635 ZZ	MR128 ZZ	F6000 ZZ	63802 ZZ	MR95
LM3UU	LM4UU	LM5UU	6812-2RS	F636 ZZ	MR148 ZZ	F6001 ZZ	2085	MR84
16000ZZ	16000-2RS	1601-2RS	SG25	SG35	MR149 ZZ	F6803ZZ	F6804ZZ	F6805ZZ
16001ZZ	16001-2RS	1602-2RS	F6005ZZ	F6903ZZ	F6904ZZ	F6905ZZ	F6906ZZ	F16004ZZ
16002ZZ	16002-2RS	1603-2RS	1601 ZZ	F6700 ZZ	F6701ZZ	F63800ZZ	62800ZZ	62900ZZ
16003ZZ	16003-2RS	1604-2RS	1602 ZZ	16100 ZZ	6700ZZ	6700-2RS	6705ZZ	6705-2RS
16004ZZ	16004-2RS	1605-2RS	1603 ZZ	16101 ZZ	6701ZZ	6701-2RS	6706ZZ	6706-2RS
16005ZZ	16005-2RS	1606-2RS	1604 ZZ	62000-2RS	6702ZZ	6702-2RS	6707ZZ	6707-2RS
16006ZZ	16006-2RS	1607-2RS	1605 ZZ	62001-2RS	6703ZZ	6703-2RS	6708ZZ	6708-2RS
16007ZZ	16007-2RS	1614-2RS	1606 ZZ	1607 ZZ	6704ZZ	6704-2RS	6709ZZ	6709-2RS
1614 ZZ	6710ZZ	6710-2RS						

附件

RoHS 测试流程图

- 1) 分析人员：肖戈 / 胡香云
- 2) 项目负责人：汪丹 / 余晓璐
- 3) 样品按照下述流程被完全消解（六价铬和多溴联苯 / 多溴二苯醚测试除外）。

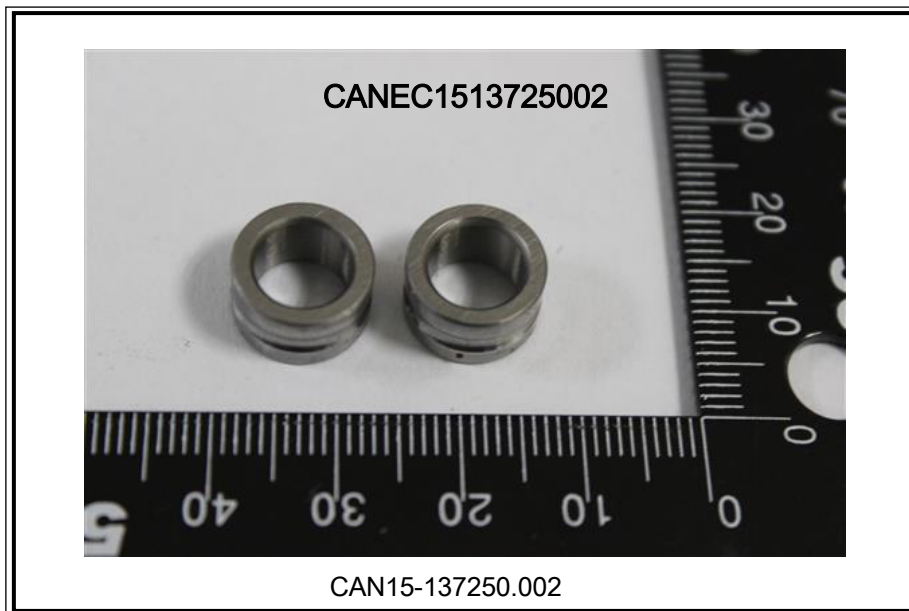


测试报告

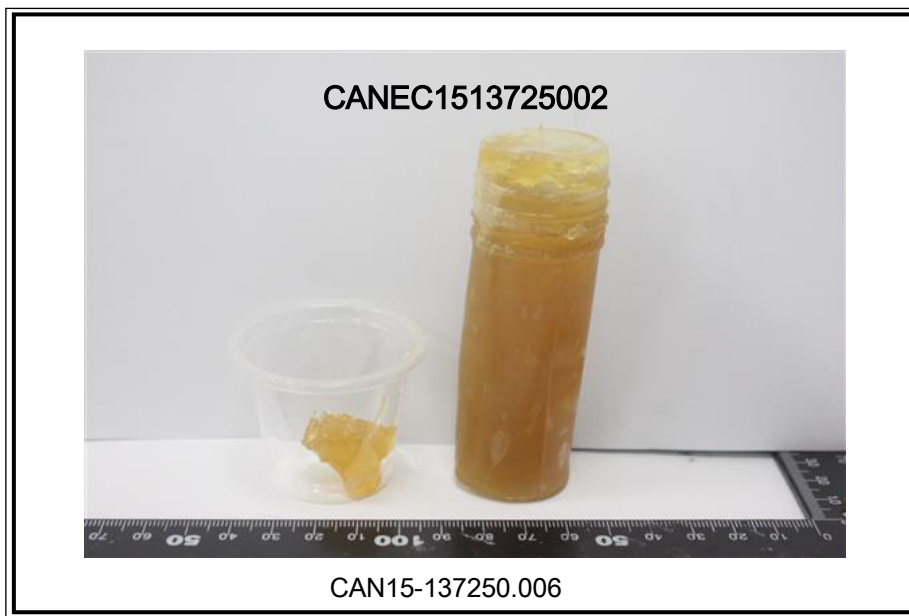
No. CANEC1513725002

日期: 2015年08月12日 第8页,共10页

样品照片:







此照片仅限于随SGS正本报告使用

*** 报告完 ***